

GENO®-hot water filter
S-WW 1", S-WW 1½"

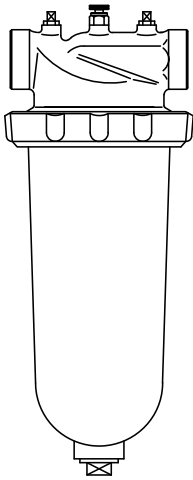


Fig. 1: GENO®-hot water filter S-WW 1" and S-WW 1½"



Fig. 2: Set of seals S-WW 1" and S-WW 1½"



Fig. 3: Replacement filter element S-WW 1" and S-WW 1½"

Designated application

The GENO®-hot water filters S-WW are designed for the filtration of drinking and industrial water. They protect the water pipes and connected water-carrying system parts from disturbances and corrosion damage due to undissolved impurities (particles) such as rust particles, sand, etc.

The GENO®-hot water filters S-WW can also be used for the filtration of well water. Regarding process water and cooling water for flow-through cooling, the filters may only be used in the partial flow. They are not suitable for circulation water that has been treated with chemicals.

The GENO®-hot water filters are suitable for application in the suction and in the pressure range.

The filters are **neither suitable** for oils, greases, solvents, soaps and other lubricating media, **nor** for the separation of water-soluble substances.

Function

The raw water flows into the filter via the raw water inlet and then from the outside in through the filter element and to the pure water outlet. Thus, foreign particles of a size > 50 µm are retained at the outside of the filter fabric.

If the water pressure in the pipe system drops noticeably due to the increasing pollution of the filter fabric, the filter insert must be replaced.

It must be replaced after 6 months of operation at the latest, however - irrespective of the degree of pollution (acc. to DIN EN 806, part 5).

Design

Filter, completely made of fitting-type brass incl. deaeration screw. Suitable for installation in horizontal pipes. Filter element made of stainless steel.

All water-contacting parts meet the requirements of the German Food and Feed Act (LFGB).

Scope of supply

GENO®-hot water filter S-WW, completely made of brass with closing plug ½", filter element made of stainless steel, filter fineness 50 µm, seals made of EPDM.

Installation requirements

Please observe local installation directives, general guidelines and technical specifications.

The installation site must be frost-proof and ensure the filter's protection from chemicals, dyes, solvents and vapours

Spare parts

Replacement filter element
50 µm, stainless steel

Order no. 101 150

Spare O-ring 90 x 3

Order no. 101 160

Pressure gauge

Order no. 100 890

Accessories

Strap wrench

Order no. 105 805

Technical specifications	GENO®-hot water filter	
	S-WW 1"	S-WW 1½"
Connection data		
Nominal connection diameter	R 1" (female thread)	R 1½" (female thread)
Performance data		
Nominal flow rate at 0.2 bar Δp	[m³/h]	6.0
Nominal pressure (PN)	[bar]	10
Nominal filter fineness	[µm]	50
Operating pressure at max. water temperature	[bar/°C]	10/90
Dimensions and weights		
A Installation length without screw connections	[mm]	130
C Min. distance to wall	[mm]	80
D Height above centre of connection	[mm]	42
E Overall height of UK filter up to centre of connection	[mm]	262
F Total height	[mm]	304
G Space above upper edge of filter	[mm]	50
H Space required for replacement of filter element	[mm]	252
Empty weight	[kg]	6
Ambient data		
Max. water temperature	[°C]	90
Max. ambient temperature	[°C]	40
Order no.	101 810	101 710

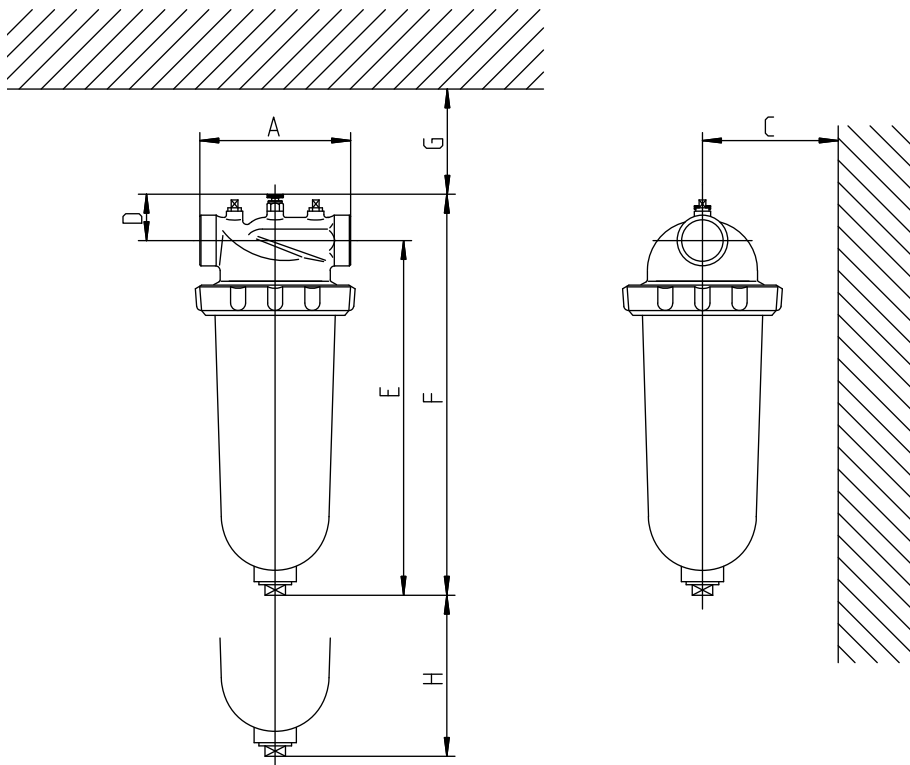


Fig. 4: Dimensional drawing of GENO®-hot water filter S-WW 1" and S-WW 1½"